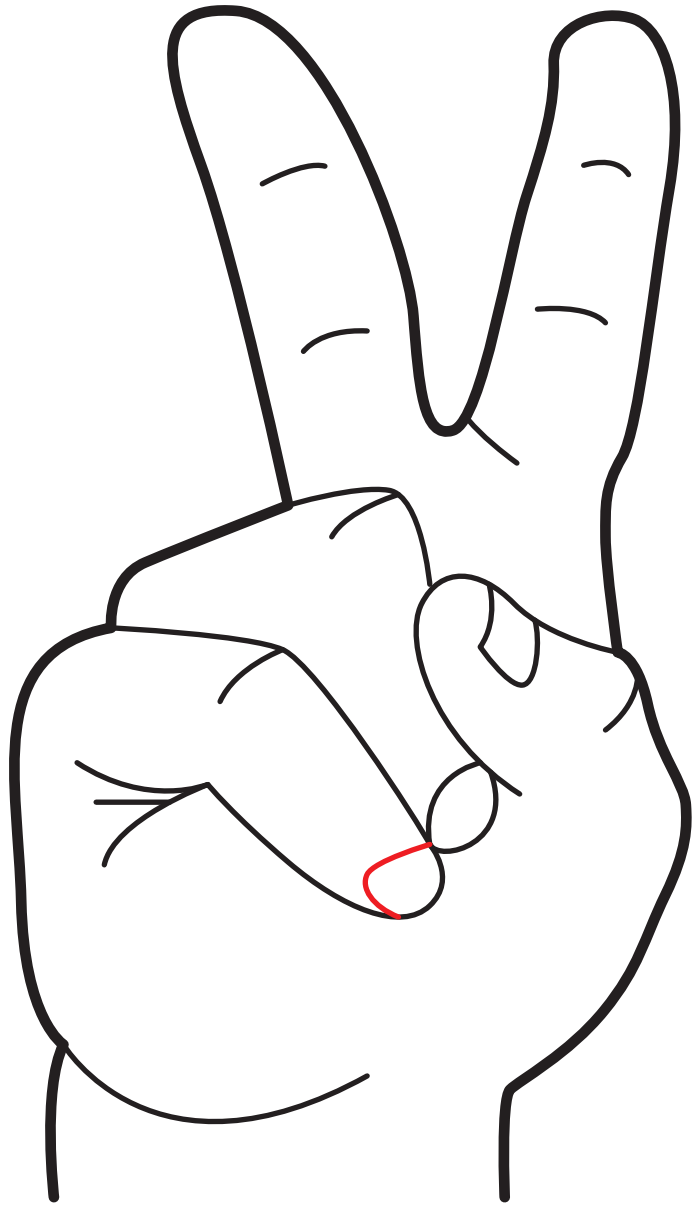
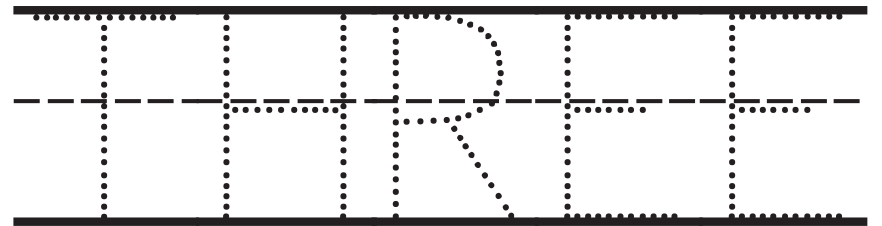
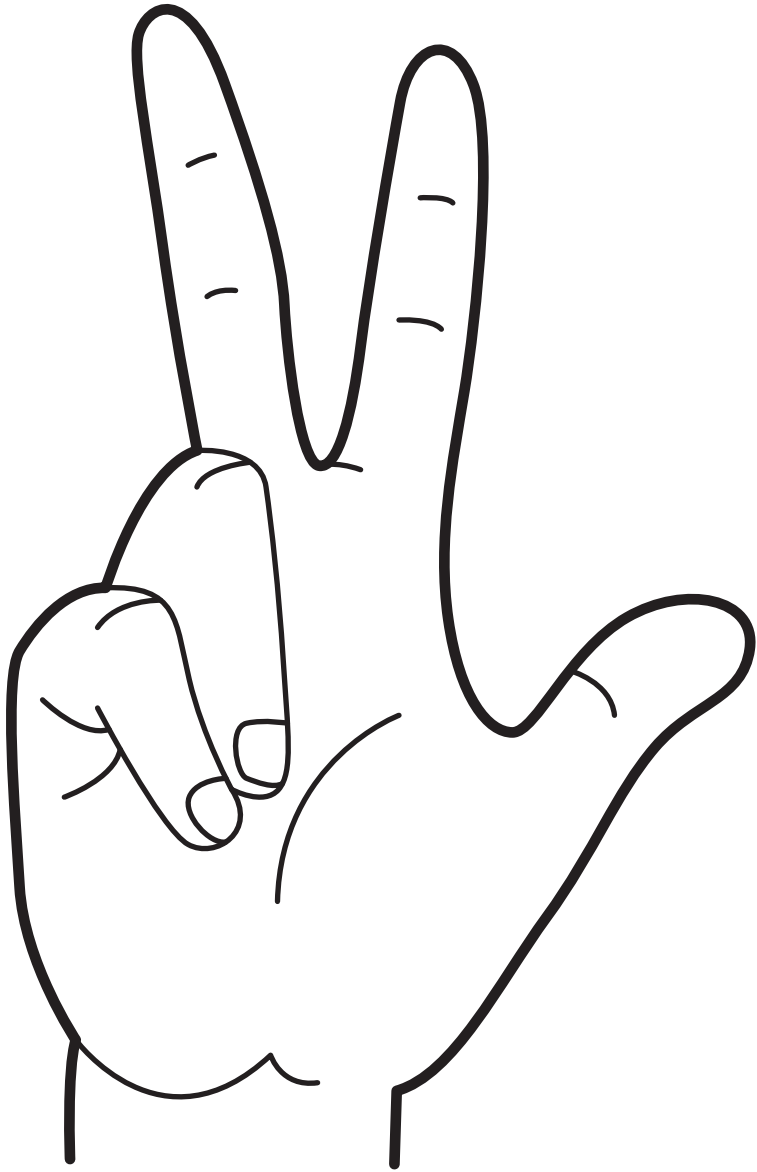


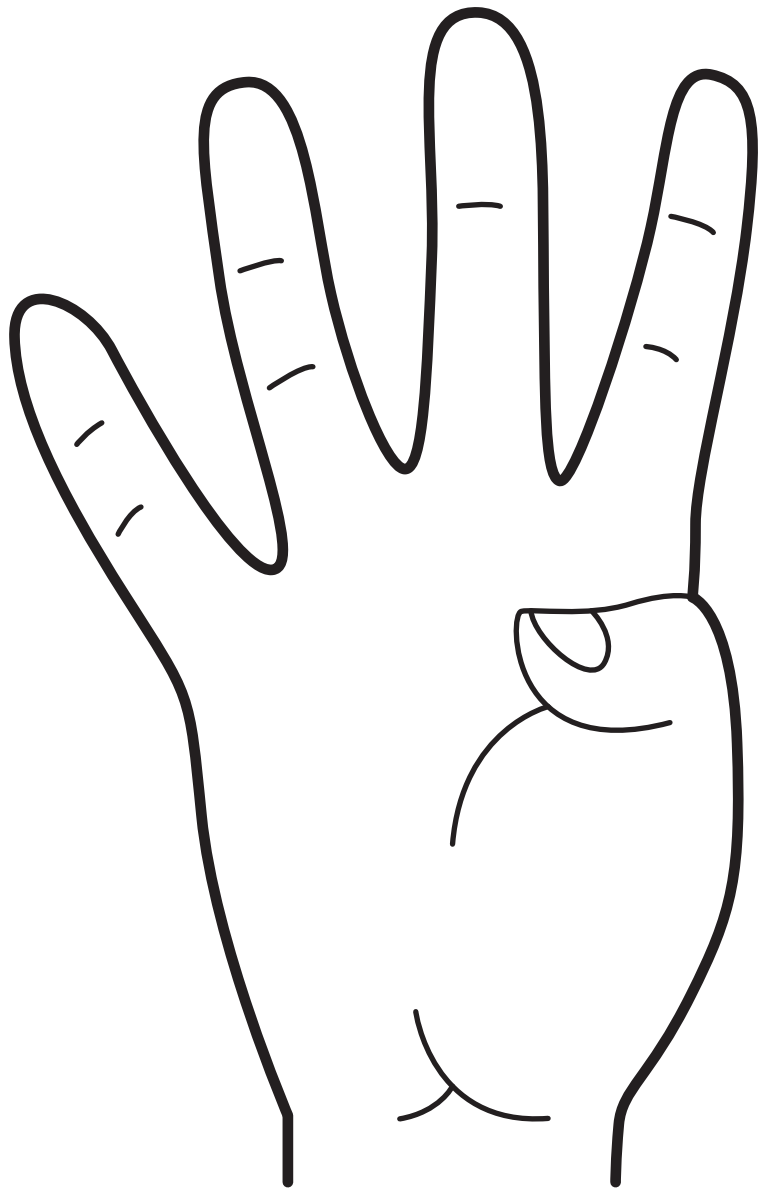


A large rectangular frame divided into two horizontal sections. The top section contains a grey number '1' with a dotted line and a downward-pointing arrow indicating the stroke direction. The bottom section contains the word 'ONE' in a dotted font, positioned between three horizontal lines (top, middle, and bottom) to guide letter height and placement.

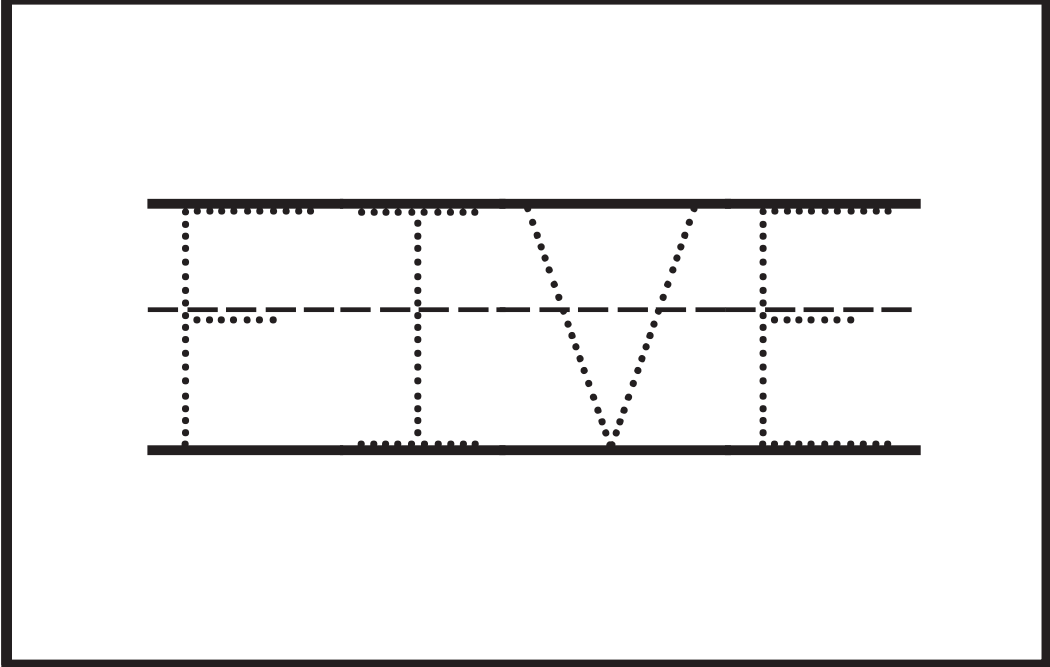
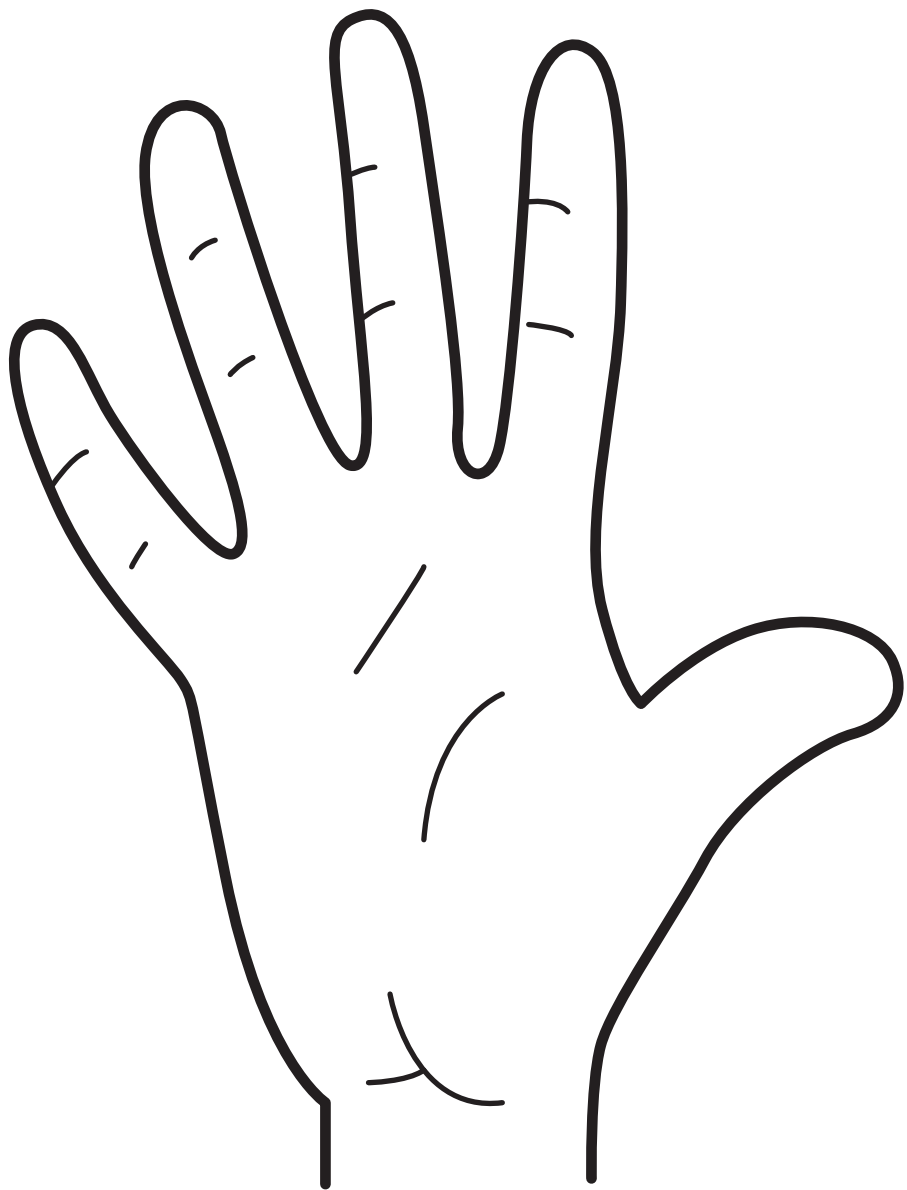


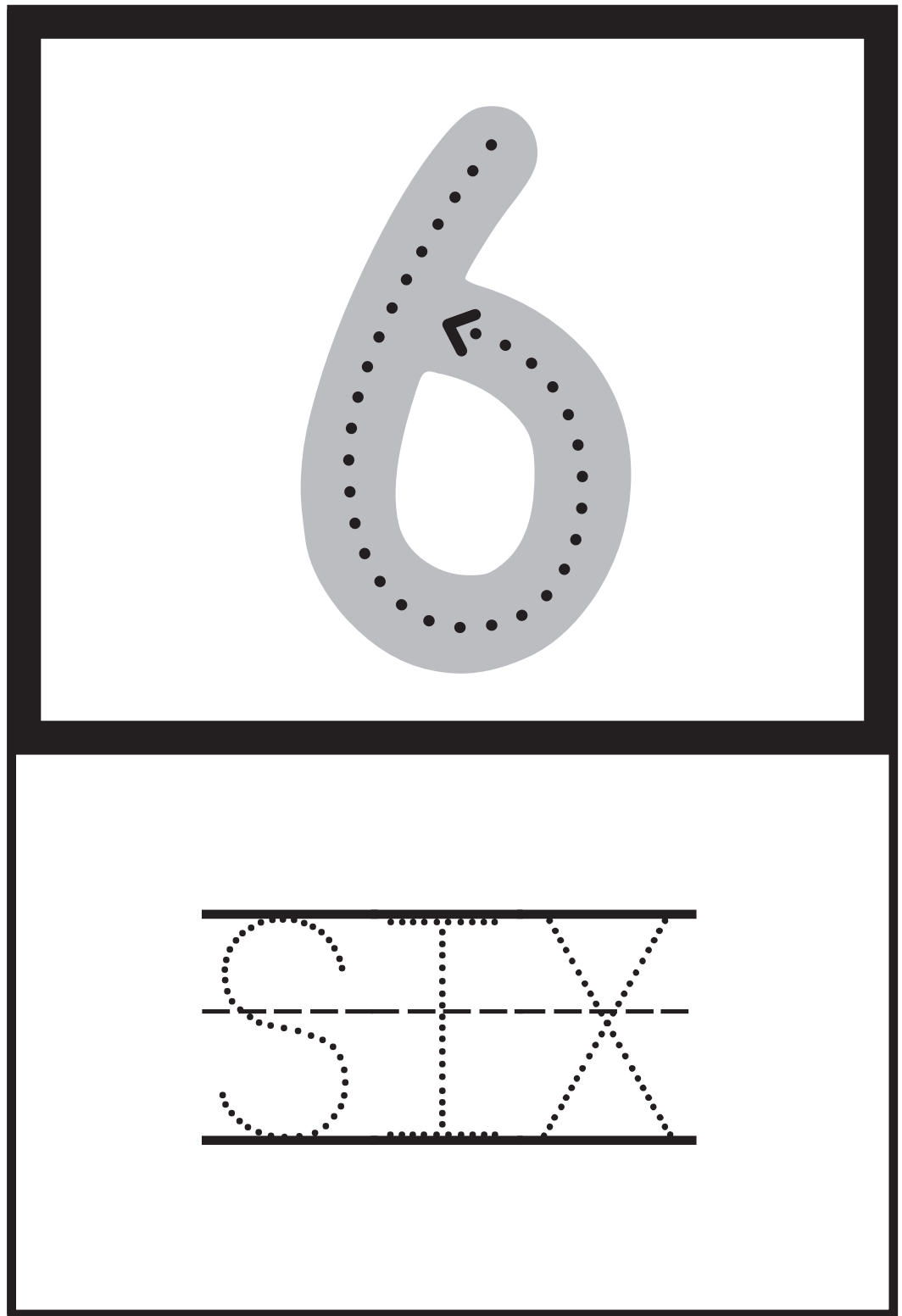
A large rectangular frame divided into two horizontal sections. The top section contains a large, light gray number '2' with a dotted line tracing path and a black arrow at the bottom right indicating the direction of the stroke. The bottom section contains the word 'TWO' in a dotted font, positioned between three horizontal lines: a solid top line, a dashed middle line, and a solid bottom line.

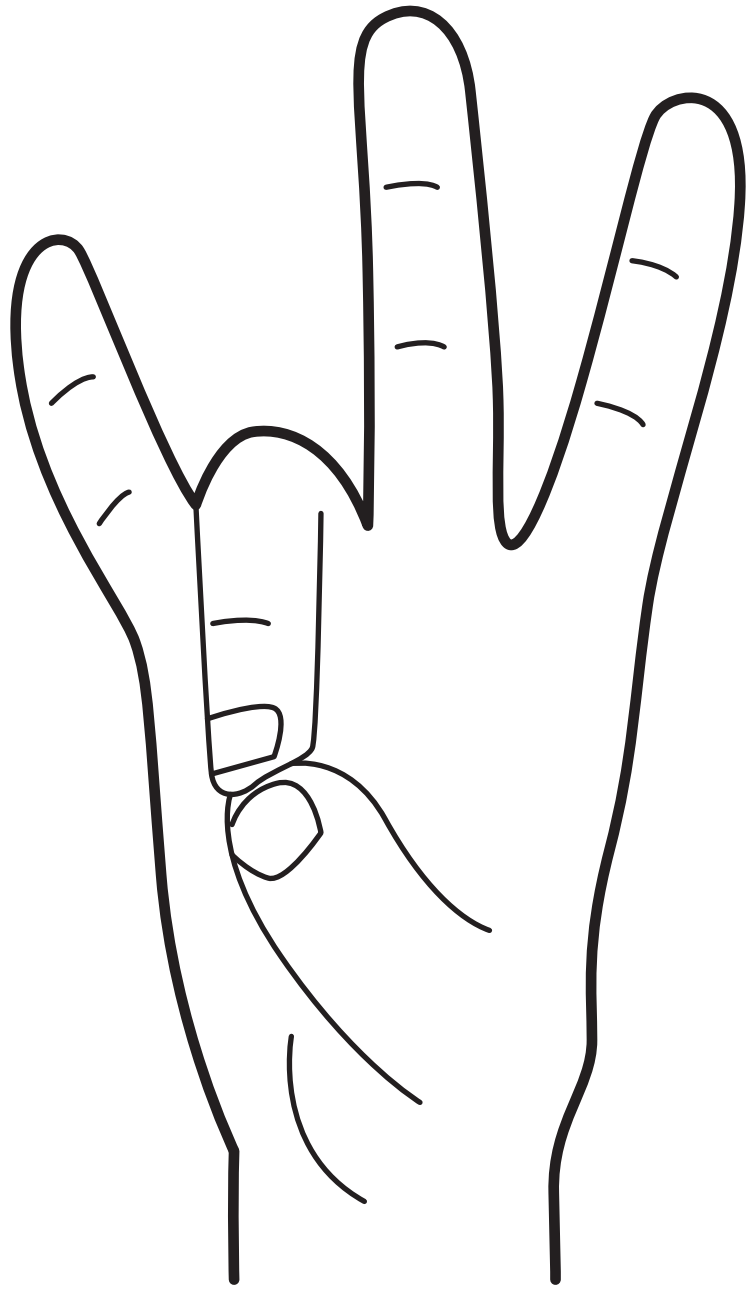




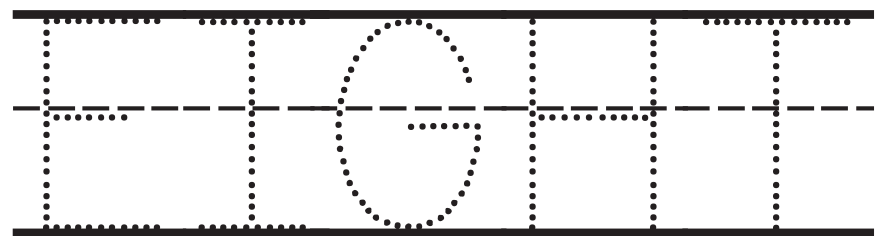
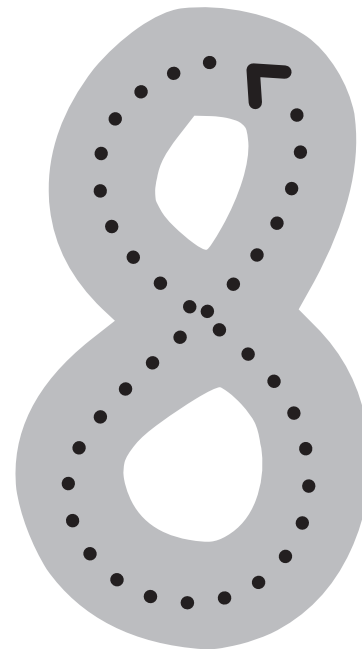
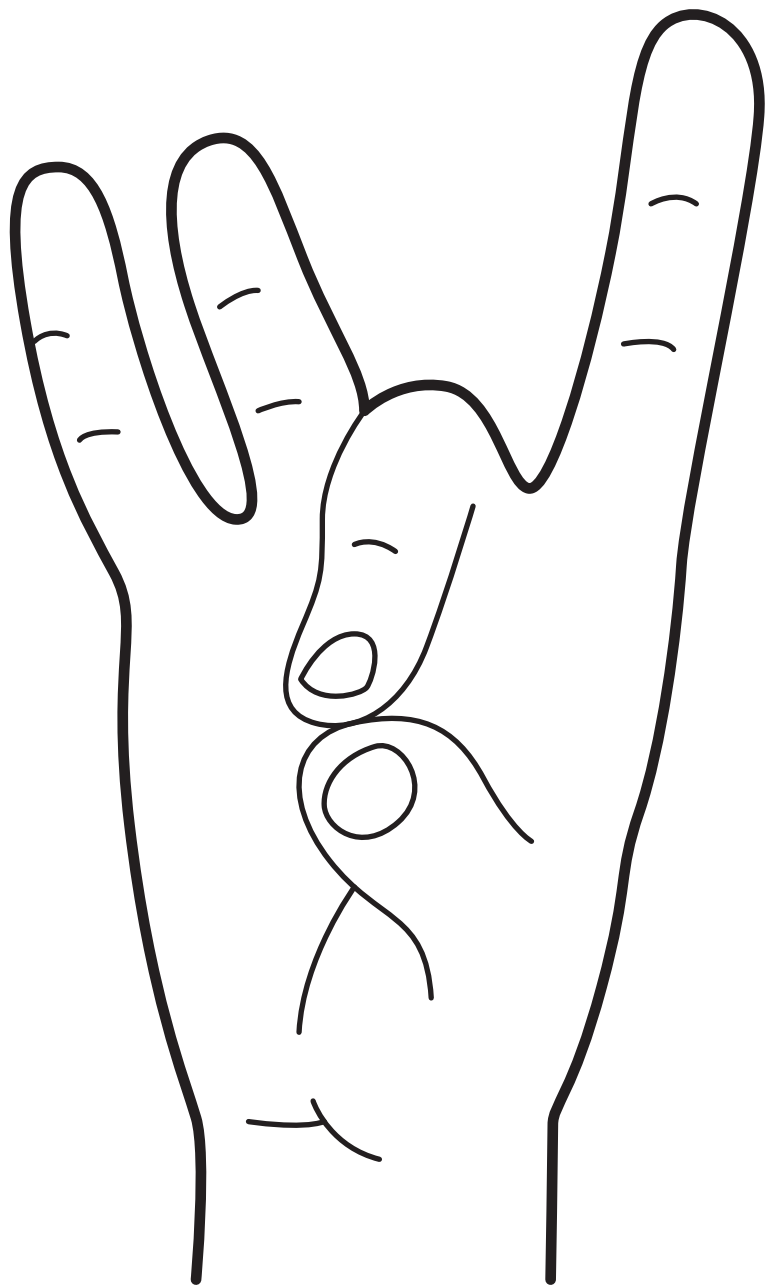
A large rectangular frame divided into two horizontal sections. The top section contains a large, light gray number '4' with a dotted line tracing path. A small black arrow on the right side of the horizontal bar points to the right, and a small black arrow at the bottom of the vertical stem points downwards. The bottom section contains the word 'FOUR' in a dotted font, positioned between two solid horizontal lines. A dashed horizontal line runs through the middle of the word, serving as a baseline for the letters.



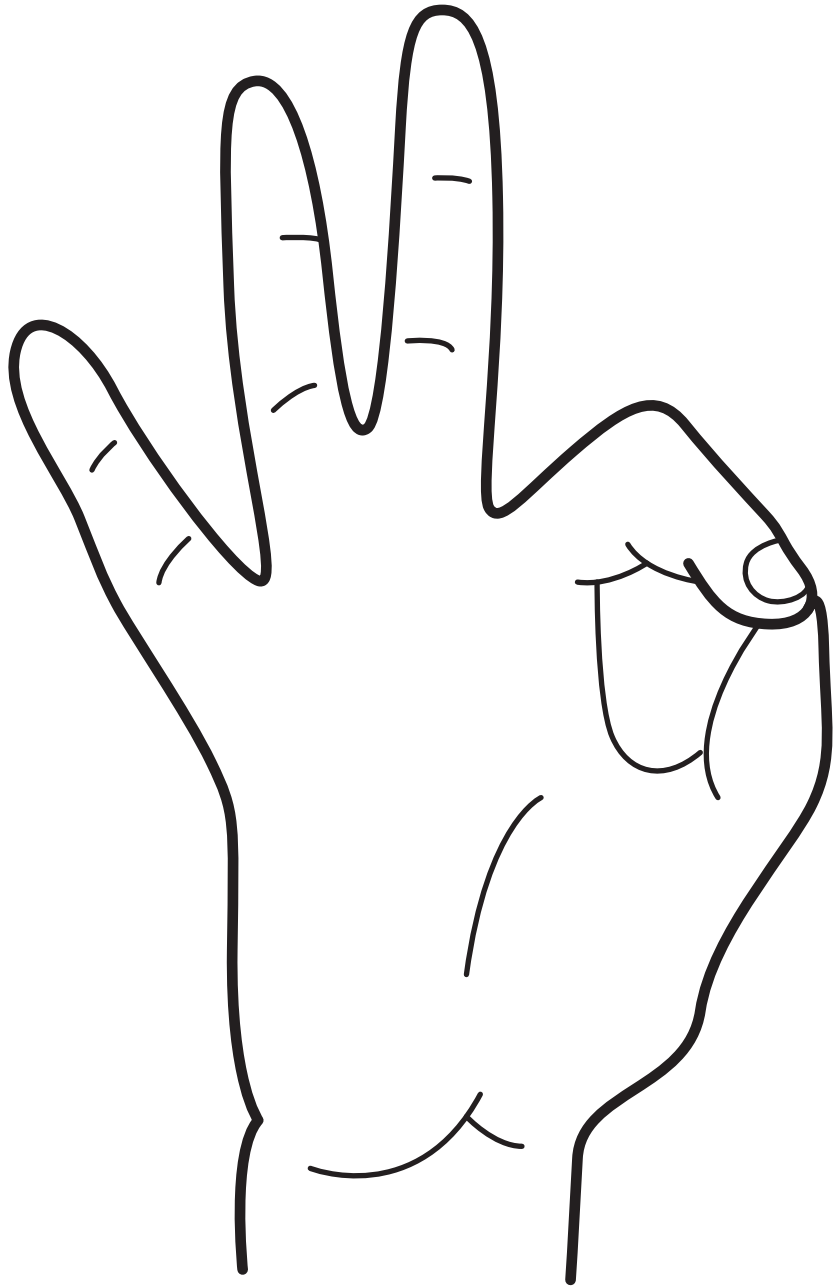




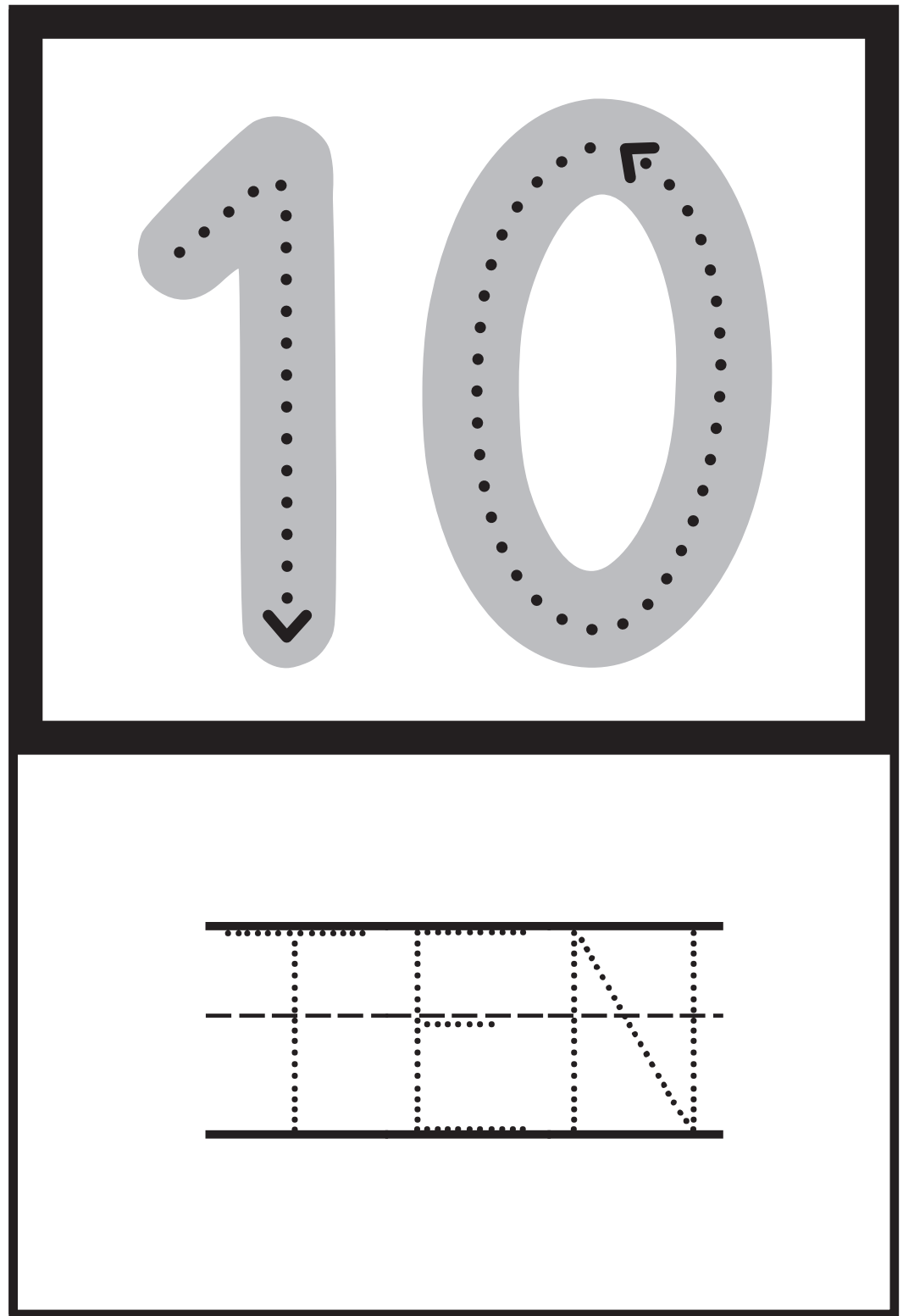
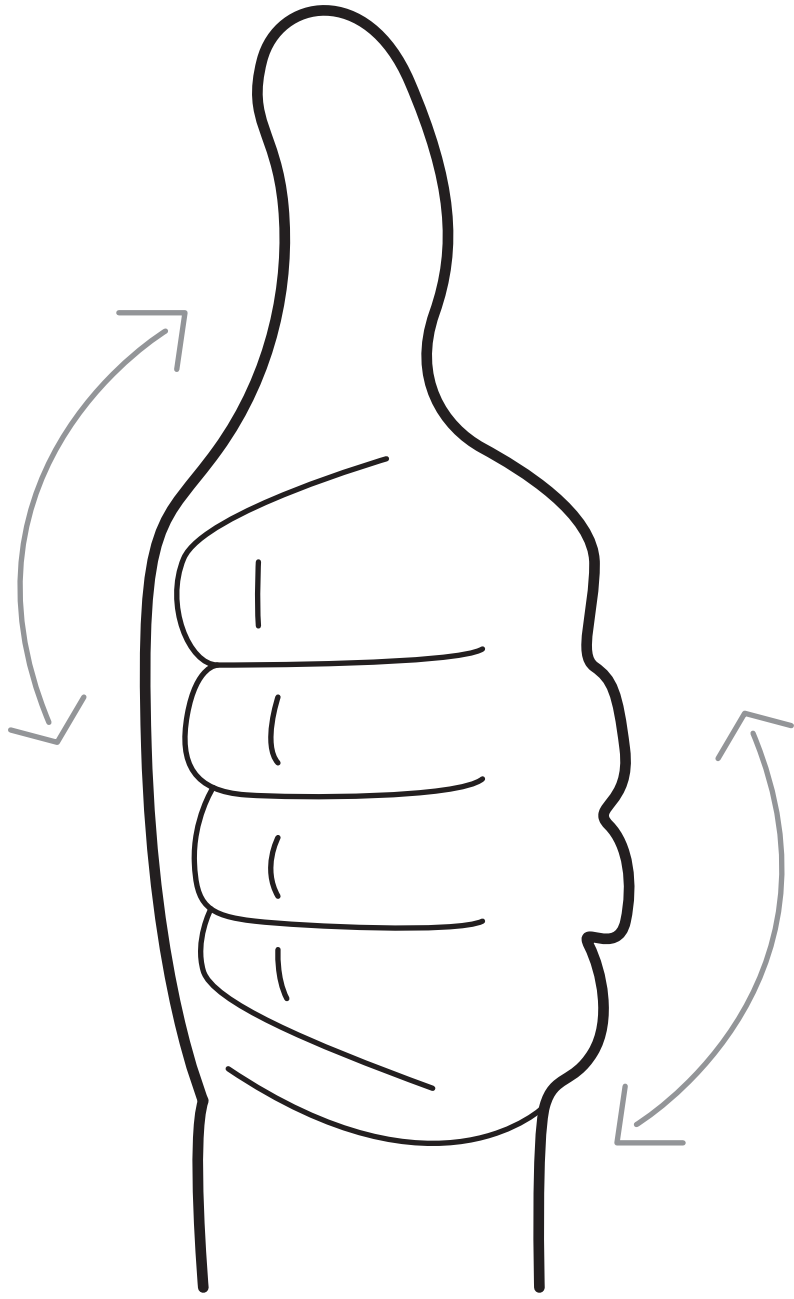
A large rectangular box with a thick black border, divided into two horizontal sections. The top section contains a large, light gray number '7' with a dotted line tracing path and a small arrow at the bottom left indicating the starting point and direction of the stroke. The bottom section contains the word 'SEVEN' in a dotted font, positioned between three horizontal lines (top, middle dashed, and bottom) for tracing practice.

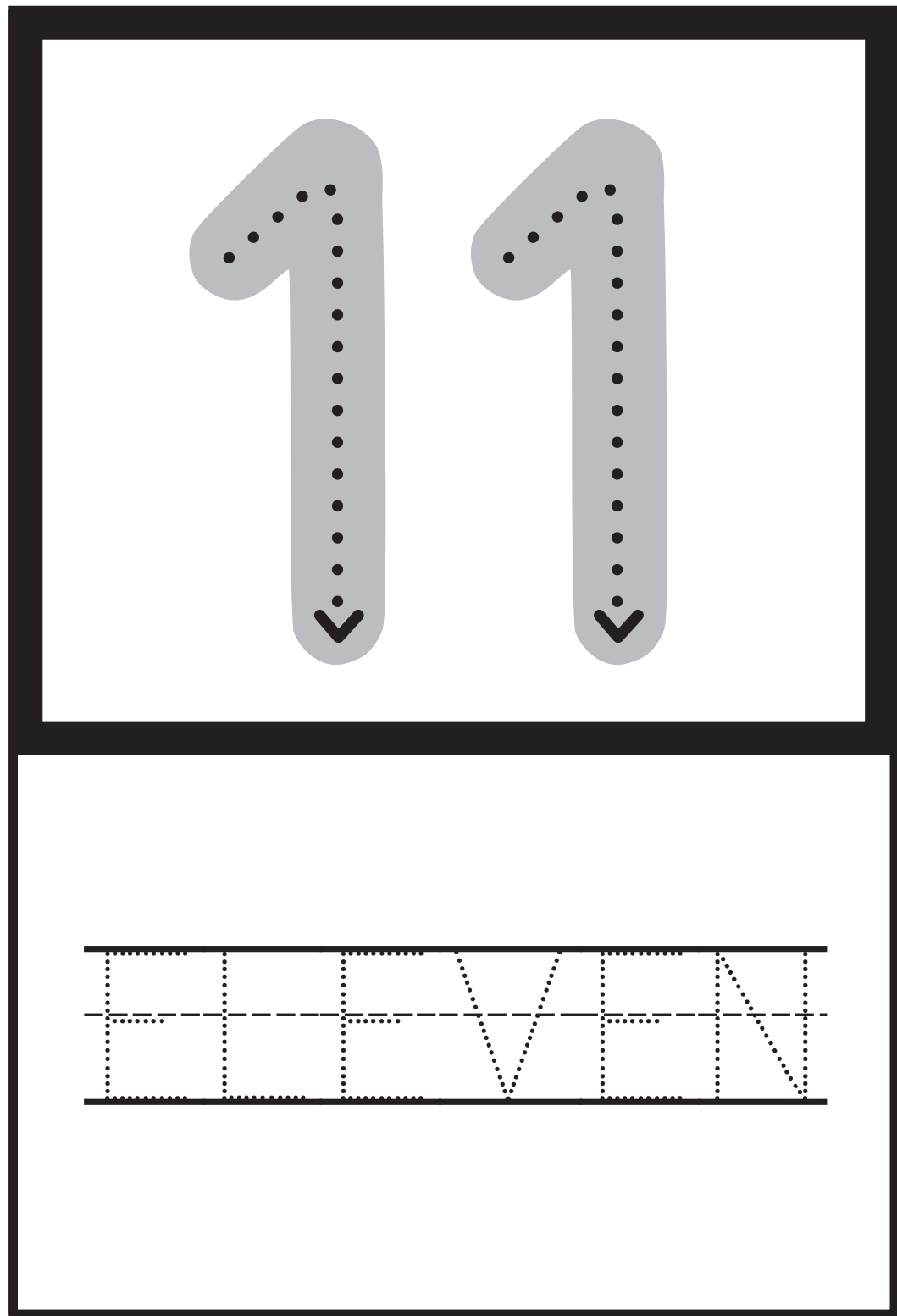
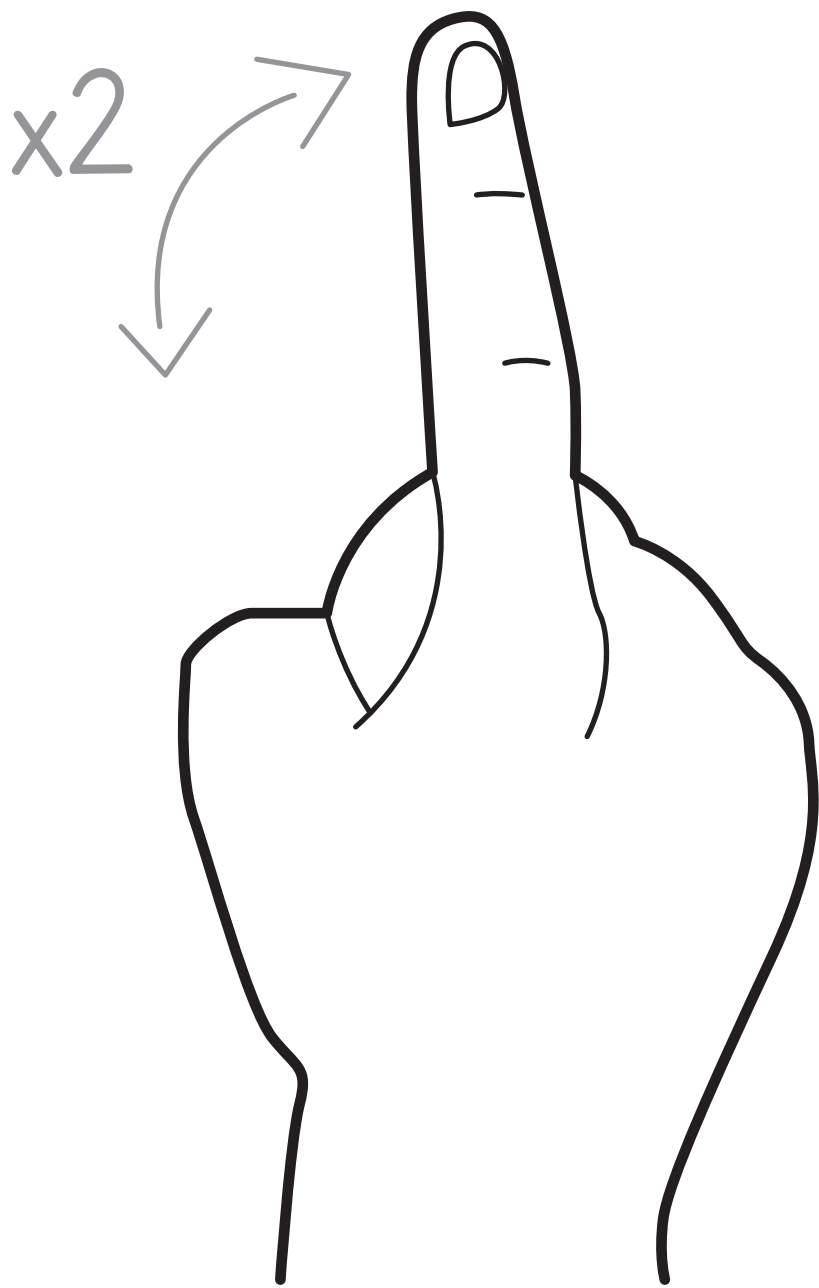






A large rectangular frame with a thick black border, divided into two horizontal sections. The top section contains a large, light gray number '9' with a dotted outline and a small arrow at the bottom left indicating the starting point and direction of the stroke. The bottom section contains the word 'NINE' in a bold, dotted font, positioned between two solid horizontal lines with a dashed horizontal line in the middle, designed for tracing practice.





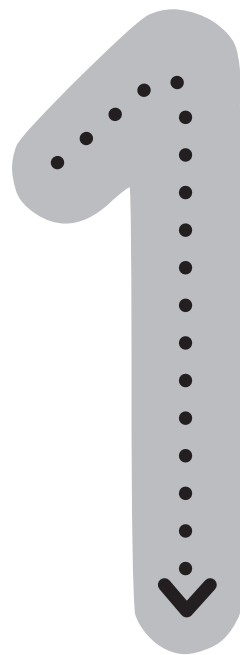
x2



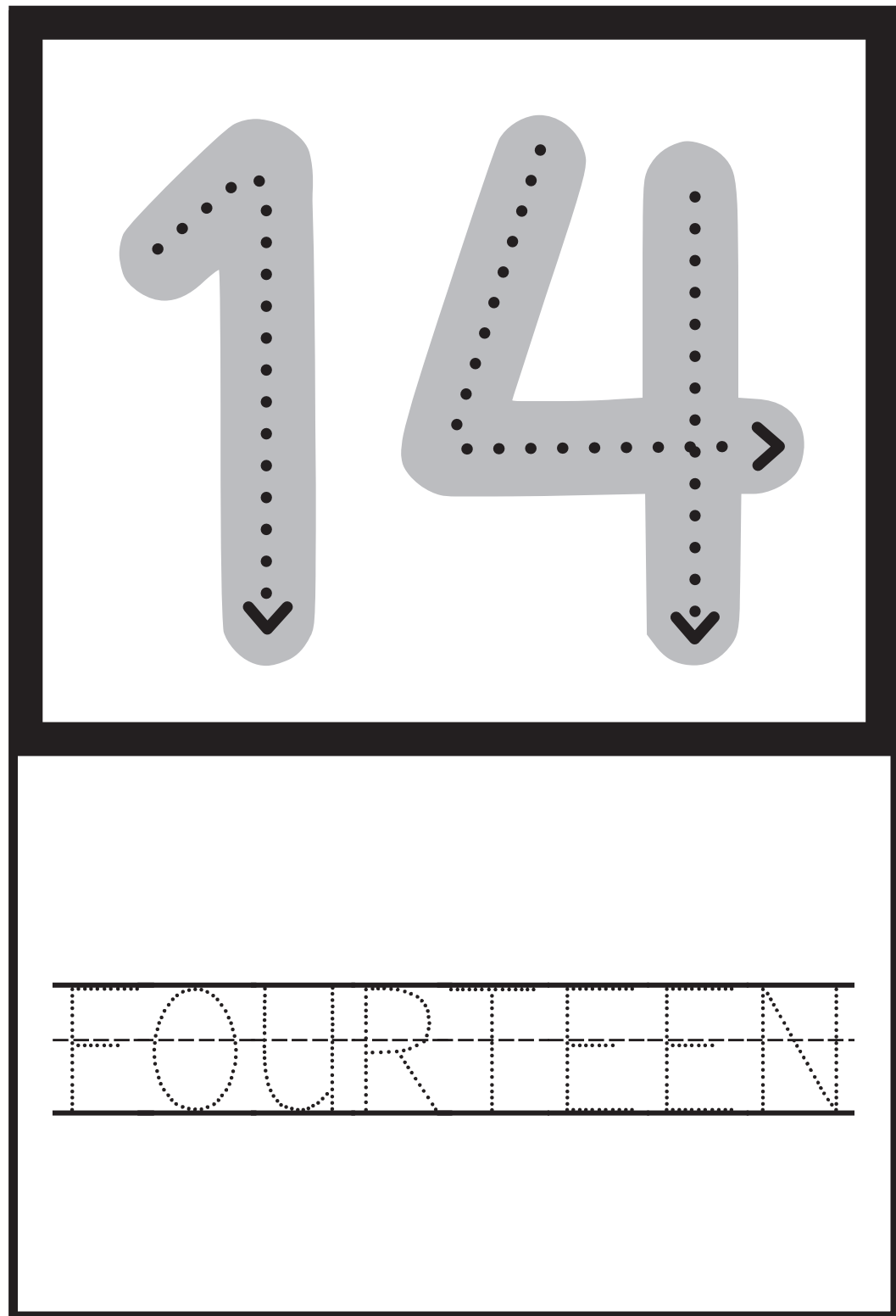
1 2

TWELVE

x2

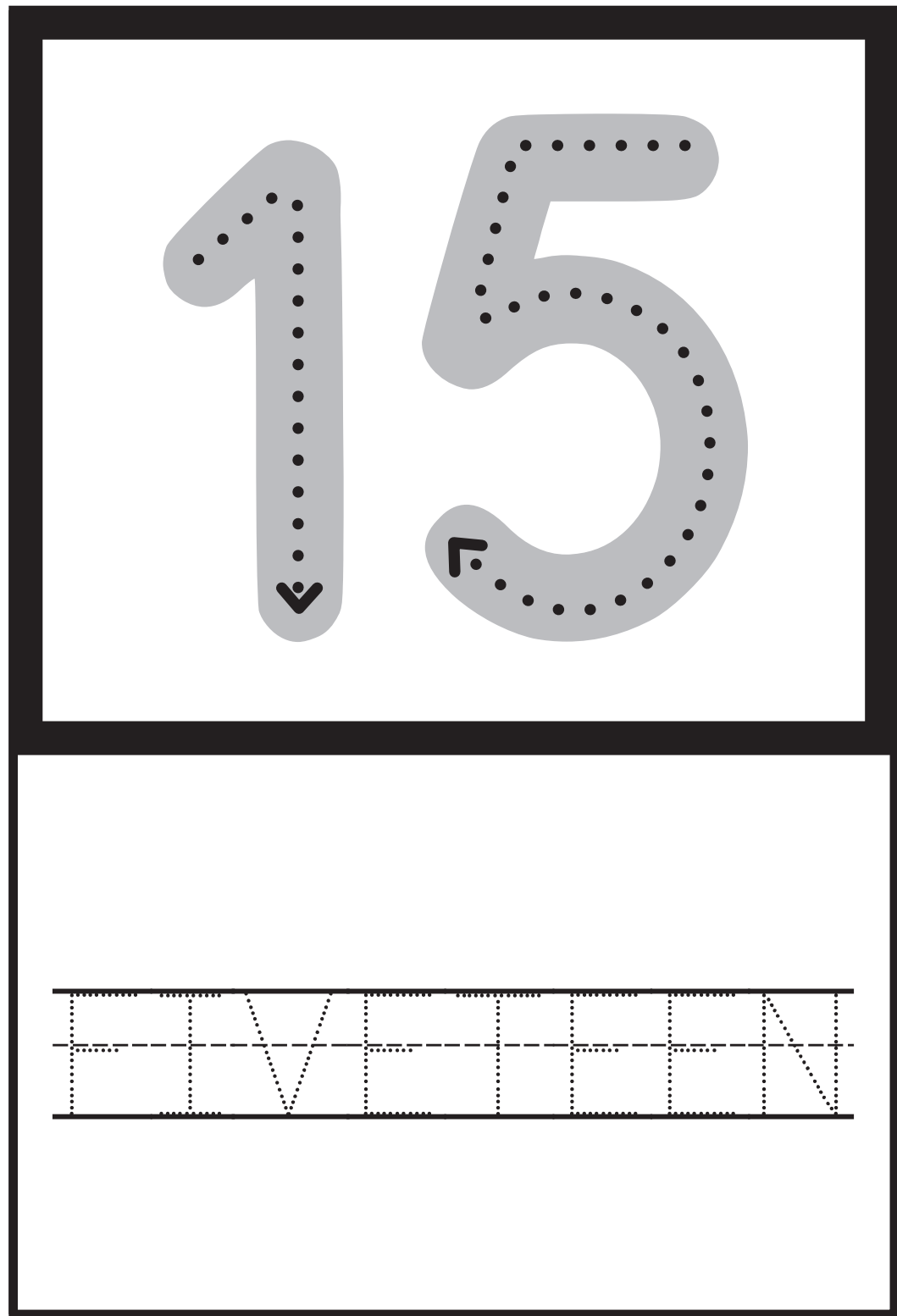


THIRTEEN



1 4

FOURTEEN





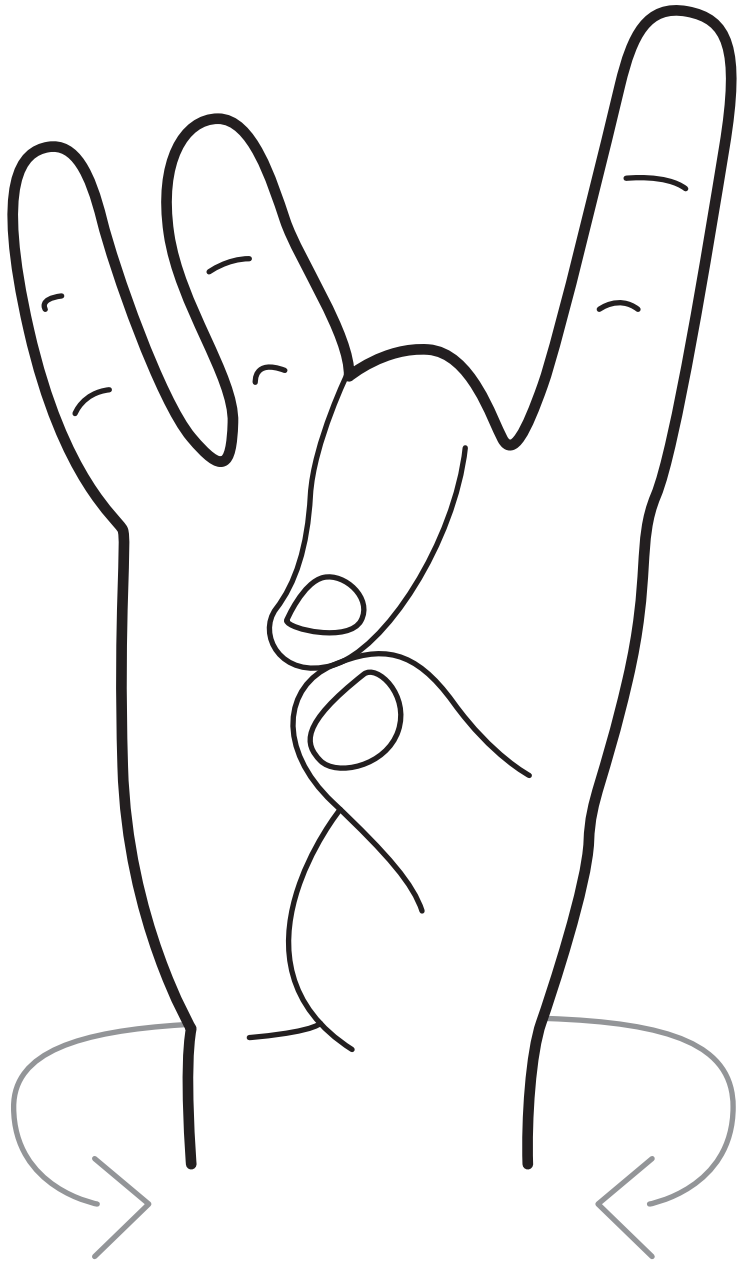
A large rectangular box divided into two horizontal sections. The top section contains the numbers '1' and '6' in a light gray font with dotted lines for tracing. The number '1' has a downward-pointing arrow at the bottom. The number '6' has an arrow at the top pointing left, indicating the start of the counter-clockwise stroke. The bottom section contains the word 'SIXTEEN' in a light gray font with dotted lines for tracing, set between two horizontal lines.



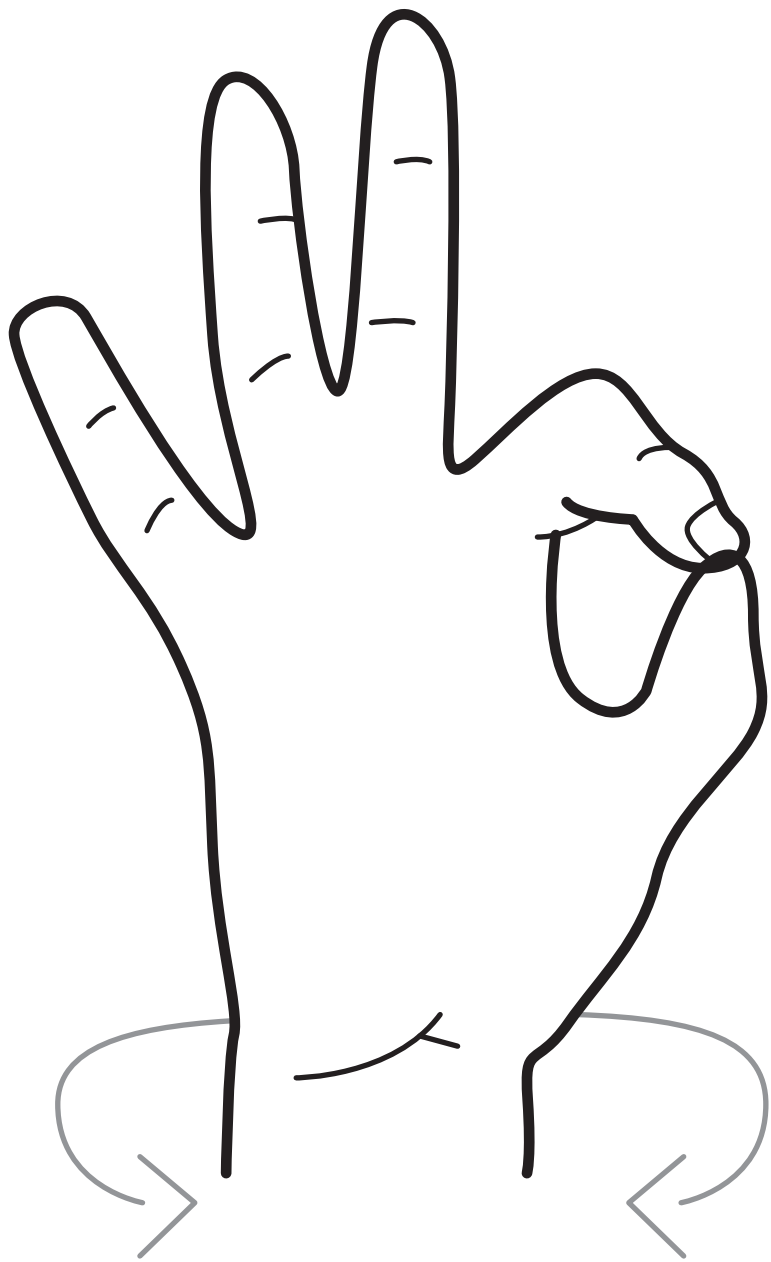


17

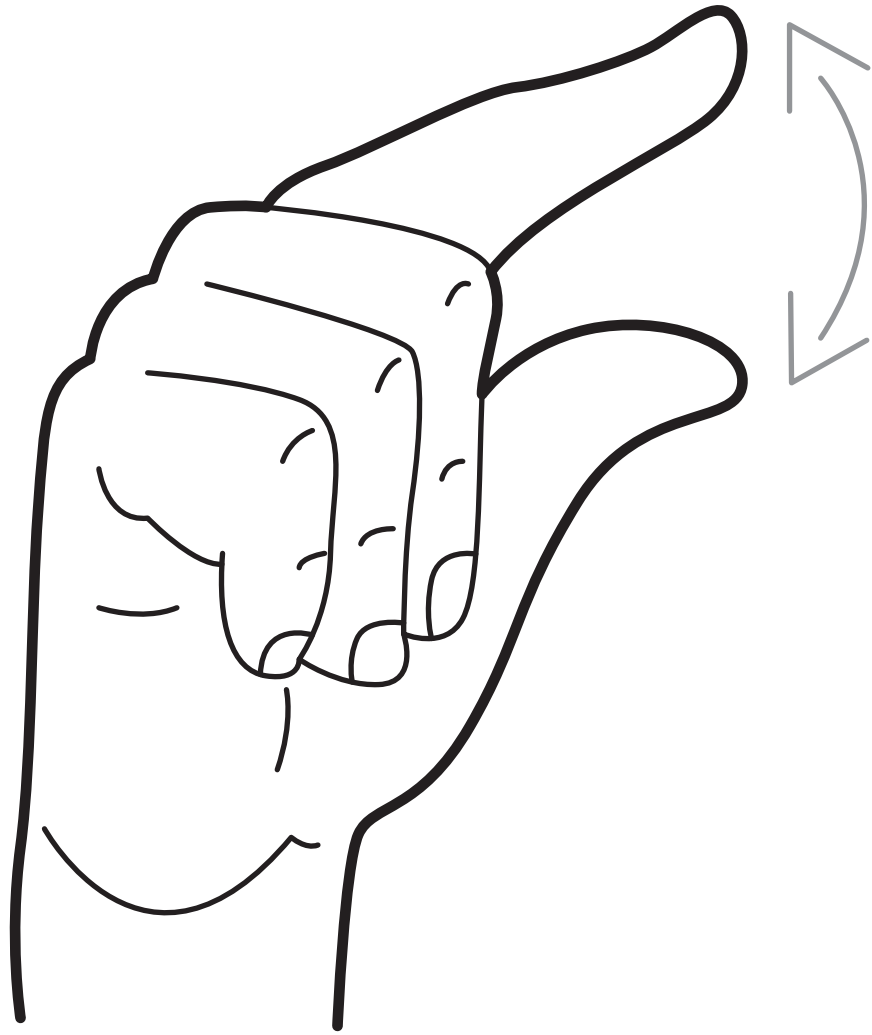
SEVENTEEN



A large rectangular box divided into two horizontal sections. The top section contains the number '18' in a light gray, dotted font. The digit '1' has a downward-pointing arrow at its base and a top-left corner arrow. The digit '8' has a top-right corner arrow. The bottom section contains the word 'EIGHTEEN' in a light gray, dotted font, positioned between two solid horizontal lines for tracing.



A large rectangular box containing a tracing guide for the number 19. The top half shows the numbers 1 and 9 in a light gray font with dotted lines and arrows indicating the stroke direction. The bottom half shows the words "NINETEEN" in a dotted font on a set of three horizontal lines (top, middle, bottom) for tracing practice.



A large rectangular box divided into two horizontal sections. The top section contains the numbers '20' in a light gray font with dotted lines for tracing. The number '2' has a solid black arrow at its base pointing to the right. The number '0' has a solid black arrow at its top right corner pointing downwards and to the left. The bottom section contains the word 'TWENTY' in a light gray font with dotted lines for tracing, positioned between three horizontal lines: a solid top line, a dashed middle line, and a solid bottom line.